

FORMATIVE ASSESSMENT – SECOND MID TERM**COMPUTER SCIENCE****Max. Marks: 25****Std - V****Time: 1 Hr**

Name of the School: _____	Name of the Student: _____
Place: _____	Roll No.: _____

I. Choose the best answer:**5 x 1 = 5**

- Network topologies are classified into _____ categories.
a) 2 b) 3 C) 4 D) 5
- Computer networks can be classified into _____ categories.
a) 5 b) 2 c) 4 d) 3
- The internet is the best example of _____
a) MAN b) LAN c) PAN d) WAN
- The links connecting the devices are often called _____
a) communication channels b) transmission media
c) sharing devices d) applications
- There is no central host computer or server in _____ topology.
a) Mesh b) Bus c) Ring d) Both (b) and (c)

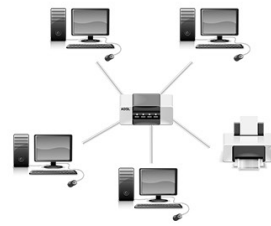
II. Answer the following in one or two lines:**4 x 2 = 8**

- What are the characteristics to determine the category of a network?
- What are the communication channels used in various networks?
- What is network topology?
- What is a network?

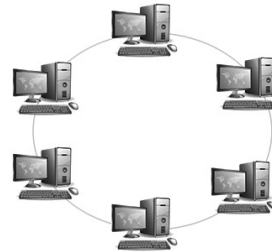
III. Match the following:

5 x 1 = 5

1. Mesh topology -



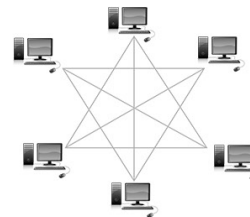
2. Bus topology -



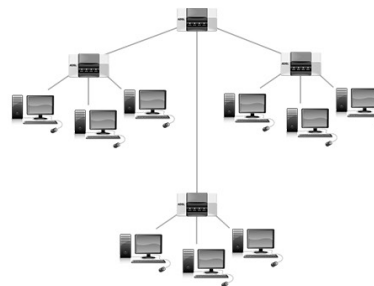
3. Ring topology -



4. Tree topology -



5. Star topology -



IV. Answer the following in detail:

1 x 5 = 5

1. What are the advantages of a network?

V. Draw a mind map:

1 x 2 = 2

1. The different types of network in computers.