

SUMMATIVE ASSESSMENT - SECOND TERM**COMPUTER SCIENCE****Max. Marks: 50****Std - V****Time: 2 Hrs**

Name of the School: _____	Name of the Student: _____
Place: _____	Roll No.: _____

I. Choose the best answer:**4 x 1 = 4**

- The most common use of the internet is _____.
a) drawing b) playing c) e-mail d) reading
- The Internet is the best example of _____.
a) MAN b) LAN c) WAN d) PAN
- _____ provides you access to the Internet.
a) IP b) ISP c) USP d) TCP
- There is no central host computer or server in _____ topology.
a) Mesh b) Bus c) Ring d) Both b and c

II. Fill in the blanks:**4 x 1 = 4**

- _____ symbol is used in an e-mail address.
- Computer networks can be classified into _____ categories.
- _____ is known as the father of the Web.
- The links connecting the devices are often called _____

III. Write the correct expansion of the following abbreviation:**5 x 1 = 5**

- ARPANET 10. ISP 11. Modem 12. WWW 13. E-mail

IV. Who am I?**4 x 1 = 4**

- I am a computer network used by a single person. My reach is only a few metres. Who am I?
- I am used inside a single building or buildings close to each other. Who am I?
- I am designed to extend over an entire city. Cables or satellites are used as communication channels. Who am I?
- I provide long-distance transmission of data over a large geographical area. Internet is the best example of my type. Who am I?

V. Draw a mind map:**2 x 3 = 6**

- The uses of the Internet.
- The different types of networks.

VI. Answer the following: (Any 6)

6 x 2 = 12

20. What is a web browser?
21. What is a network?
22. What is a modem?
23. What is network topology?
24. What is the use of an e-mail facility?
25. What are the characteristics to determine the category of a network?
26. What is the Internet?
27. What are the communication channels used in various networks?

VII. Answer in detail: (Any 2)

2 x 5 = 10

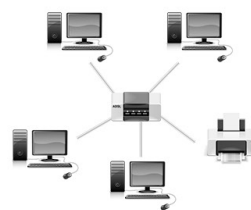
28. What are the steps to be followed to create an email account?
29. What are the advantages of a network?
30. What are the requirements for an internet connection?

VIII. Match the following:

5 x 1 = 5

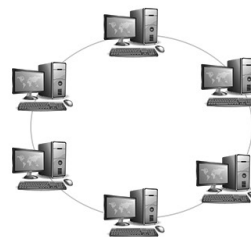
31. Mesh topology

-



32. Bus topology

-



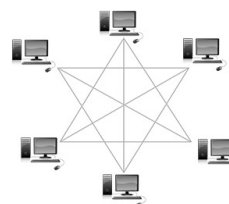
33. Ring topology

-



34. Tree topology

-



35. Star topology

-

