

SUMMATIVE ASSESSMENT – THIRD TERM

ENVIRONMENTAL STUDIES

Max. Marks: 60

Std - I

Time: 2 Hrs

Name of the School:	Name of the Student:
Place:	Roll No.:

I. Choose the best answer:

6 × 1 = 6

1. We get _____ from wood.

a. paperb. gold
2. _____ is an animal that can see in the dark.

a. Owlb. Cat
3. In deserts, _____ are used as a means of transport.

a. Camelsb. Horses
4. We wear _____ to the school every day.

a. uniformb. traditional clothes
5. We can read books in the _____.

a. sick roomb. library
6. _____ provides us with wool.

a. Sheepb. Dog

II. Fill the the blanks using the hint box:

6 × 1 = 6

[summer, Sun, playground, Transport, Airways, full moon]

7. _____ is a means by which we travel from one place to another.
8. The day on which the moon looks big like a ball is called _____.
9. We wear cotton clothes during _____.
10. We play games with our friends in the _____.
11. _____ is the fastest means of transport.
12. The moon gets light from the _____.

III. Write true or false:

6 × 1 = 6

13. Children can play and have fun in the classroom. _____
14. Clothes protect us from heat, cold, rain and dust. _____
15. People of different places wear different traditional clothes. _____
16. Platinum is a type of clay. _____
17. We can see trams in Kolkata. _____
18. The sky is dark at night. _____

IV. Circle the odd one out:

5 × 1 = 5

19. Star Moon Sun Kite
20. Cat Mouse Scooter Cow
21. Tree Star Sun Earth
22. Umbrella Sweater Woollen Scarf Woollen socks
23. Car Jeep Bus Train

V. Who am I?

4 × 1 = 4

24. There are many of us. We are very far away from you.
We twinkle at night. _____.



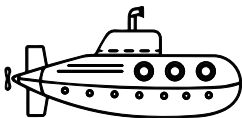
25. I go around at night. My eyes are big and round.
I sit on tree tops. _____.



26. I fly in the air, but I am not a bird.
I help carry people to far-off places. _____.



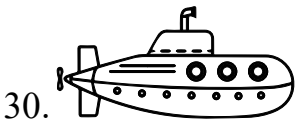
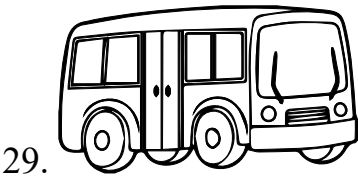
27. I take people deep into the water.
I can sink in water and come back up. _____.

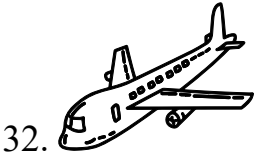
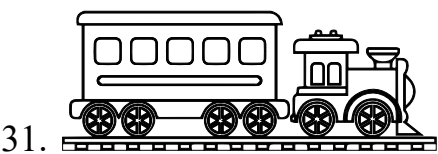


VI. Where do these vehicles move?

5 × 1 = 5

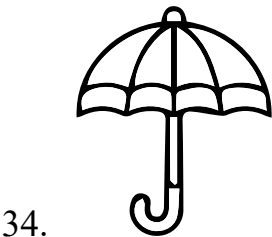
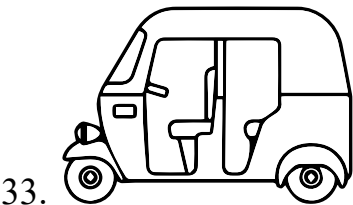
[Road, Rail, Water, Air, Under Water]



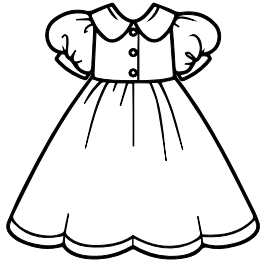


VII. Look at the pictures and write their names:

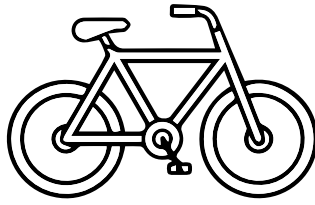
6 × 1 = 6



36.



37.

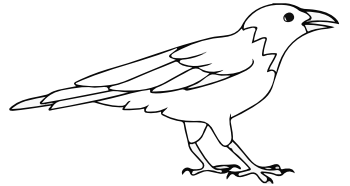
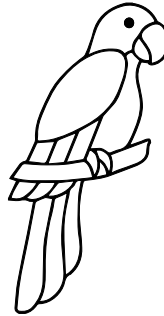
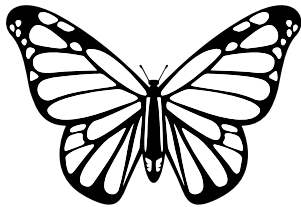
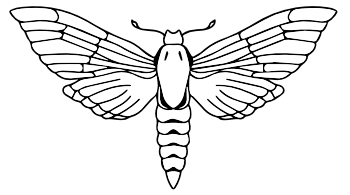
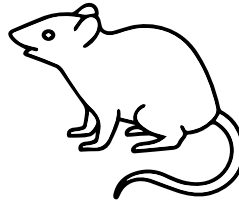
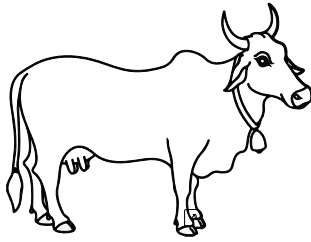
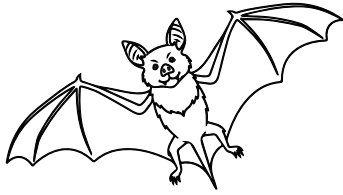


38.



VIII. 39. Write whether these animals are awake during day or night in the table given below:

$$8 \times 1 = 8$$



Nos.	Day	Night
1.		
2.		
3.		
4.		

IX. Answer the following questions: (Any 3):

$$3 \times 3 = 9$$

40. Write the different water transport.

41. What are the four means of transport?

42. Name three different materials we see around us every day.

43. What are stars?

44. List out five things found in the classroom.

X. Draw the diagram:

$2 \times 2\frac{1}{2} = 5$

45.

Sun	Moon

46.

Traffic Light